



BURTON JOYCE PARISH COUNCIL



ANNUAL REPORT 2017-18

Chair's report

The past year has seen many changes. Our former Chair Steve Cluff stepped down in January, after many years of sterling work, for which we offer our grateful thanks. Our thanks are also extended to Chris Hutt and Simon Wells for all their hard work for the Council. We are pleased to welcome our three new councillors, Sarah Cook, John Richardson and Laurence King all of whom bring a great new skill set to the Parish Council. We also have a new Parish Clerk, Jessica Sherrin who is settled in well. With the able assistance from her deputy Jayne Savage, together with David List and his staff we look forward to another year of progress.

After a lot of hard work, planning and determination, the Parish Office has now moved into its new quarters in the Old School Building and the purchase of the 125 year lease on it will be completed very soon.

Our Village Ventures performances in November and February have all been fully booked and greeted with great enthusiasm. The Fireworks display and Christmas lights have been much enjoyed and reinforced our feeling of village life, despite the pressures of creeping urbanisation which are a constant threat.

The Neighbourhood Plan is almost complete, after enormous efforts by Terry Hazard and his team, and we think we can see the beginning of the end!



New village signs part-funded by NCC and GBC installed in the summer

*Paul Hyde
Chair of the Parish Council*

Finance & General Purpose Committee

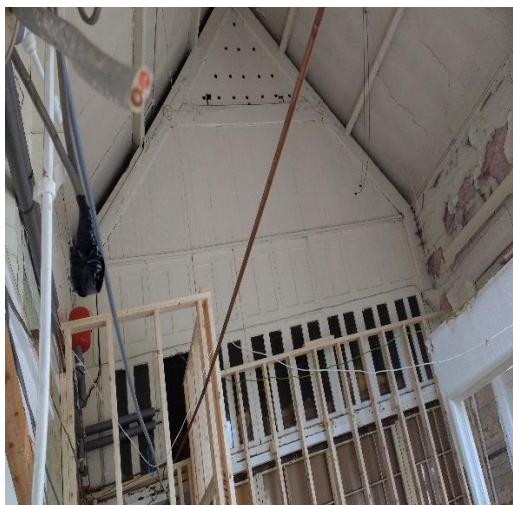
Chair – Cllr Paul Hyde

Our finances have been subject to some unusual items of expenditure this past year, largely due to the refurbished the Old School Building which now houses the Parish Office. It also accommodates the Windmill Kindergarten, The Burton Joyce Players, Children’s Sensory Therapy and the newly named Burton Joyce Brass Training Band. The Main Hall is available to rent most evenings to other community groups and societies.



Main Hall in the Old School Building

We are about to complete on the purchase of the long lease of this building, which will result in a reduction of over £5000 in our annual outlay. We expect to draw from our reserves this year to pay for some of the outlay on the building, which we regard as a one-off expenditure for the future. On that basis we increased the parish precept by less than inflation for the current financial year, and we look forward to the future with confidence.



Building works at the Old School Building

Old School Building Phase II Committee

Chair – Cllr Paul Hyde

The Parish Council has taken the opportunity to purchase the 125 year lease on the Old School Building with a view to developing the site for the benefit of the village as a whole. This is an exciting new project which is still in its infancy and we are currently at the stage of exploring ideas and suggestions from members of the community via this newly formed Committee. We are looking at possibly developing an outdoor, canopied area at the front of the site and a new building providing a flexible space for use by the community. We are also seeking external grants and funding to support the initiative. Once we have some concrete ideas and suggestions in place we

will run a consultation event to seek residents' views on the proposals. This is a long-term project which we need to make sure we get right and fulfils the needs of the village appropriately.

Planning Committee

Chair – Cllr Terry Hazard

This year, in terms of *new dwellings* under consideration by the committee, no less than 251 were reviewed:

- 204 units at Teal Close. Although not in the Parish Council boundary it was sent to the committee for our views. We raised concerns regarding increased traffic flow through the village and its impact on the local school, doctors etc.
- 44 apartments at the Burton Joyce Car Centre. Once again this falls outside the parish boundary. We generally agreed to the proposals feeling the development would allow Burton Joyce residents the opportunity to downsize and stay in the village*.
- 3 large dwellings on Lee Road (Donkey Sanctuary). This 3rd attempt to obtain planning permission was agreed by Gedling Borough Council, despite numerous objections from residents and the Parish council.

In addition to these, we received applications for 35 extensions/miscellaneous items, 3 tree reduction/pollarding applications, 1 farm building conversion, a garage conversion into a dwelling and 4 demolition and rebuilds – another uneventful year!

The Neighbourhood Plan is reaching its final stages, over 2 years since a group of 4 volunteer Parish Councillors volunteered to investigate the government initiative. The final Draft will shortly be passed for official government inspection and, if it is found to satisfactory, returned to the Gedling Borough Council to arrange a village referendum for residents to vote on the final version of the Neighbourhood Plan. We hope the village will continue in its support and vote “YES” and thank everyone who completed the surveys which have been invaluable in reaching this stage.

*Obtained from the Household Survey from resident's feedback in preparation for the Neighbourhood Plan.



Neighbourhood Plan Consultation Event in the Main Hall of the Old School Building

Poplars Sports Ground Committee Chair, Cllr Robin Ringham

2017/18 has also seen much change at the Poplars. In October Steve Cluff announced his wish to retire from the Committee and the Parish Council completely. This left a big hole for the Poplars and certainly big boots to fill. After much discussion I decided that I would put myself up as Chair of the Poplars, so in October I took over the role.

The legacy left by Steve has meant that we have a superb facility at the Poplars that is the envy of many and is financially stable. Thanks go to David List, the Grounds and Amenities Manager, and his staff Jed and Danny Riley and Digby who between them make the Ground look absolutely superb and the envy of many a visiting side.

We have been monitored by the FA on the maintenance and running of the new 3G pitch and it is fair to say they are more than happy with the way things are going. We are still looking to fill the capacity on the 3G pitch during the summer which is proving very difficult to accomplish.

BJFC is continuing to grow at all age groups and genders. Of course the new 3G pitch gives them greater choice and training facilities in the winter months

Progress has been made in improving the quality of the grass pitches to allow greater use with the eventual purchase of a Verti Drain Machine.

After a bit of a delay we are now on with the foundations for the new Bowls Club Pavilion, which is due to be finished by the end of May. It will be a great asset to the Bowls Club and the Poplars.



Digging the foundations for the Bowls Pavilion

Petanque is ever popular and is growing. Archery has had another successful year at the Poplars.

We now have a new artificial cricket wicket installed at the Poplars. This will give greater flexibility to the Cricket Club, especially at junior team level.

The fireworks display was another success this year, with a fantastic turn-out and faster entry through gates. As a rough estimate over 2,000 people came along to enjoy the wonderful display provided by Big Bang Fireworks. Thanks to all the Parish Council staff, Councillors and volunteers who helped to make it such a wonderful community event.



Big Bang Fireworks Display

The continued increase in use of the Poplars shows that it is a facility that the residents of Burton Joyce should be proud of.

Amenities Committee

Chair - Cllr Pat Blandamer

The Amenities Committee continues to oversee facilities within Burton Joyce that are managed and maintained directly by the Parish Council and its Grounds Staff. These include Roberts Recreation Ground, The Cemetery, Allotments and The Grove as well as the floral displays enjoyed in summer months.

The play equipment at the Roberts Recreation Ground is well used by local children and their families. Regular daily inspections and routine maintenance takes place. Planned maintenance is to take place over the coming months.

There were quite a few changes in tenancy of the allotments during the year and now have 9 allotments available.

The Cemetery is a tranquil and beautiful space which has seen much work during the past year including planting of a new beech hedge in the Garden of Rest. Several headstones had to be reluctantly laid flat as they were deemed to be dangerous and in danger of toppling over. This action was avoided wherever possible by contacting relatives of the deceased to carry out repairs. This highlighted the importance of families keeping their contact details updated with the Parish Office if they move away from the village so that we can keep them informed and involved with the care of their family memorials.

We have had of enquiries regarding on-line purchasing of memorial stones for the Cemetery which unfortunately cannot always be installed as they do not comply with the necessary regulations. The Parish Council strongly advises that Stone Masons are contacted prior to making any on-line purchases.

Grateful thanks go to the Parish Council's Grounds and Amenities staff who contribute greatly to the pleasant environment we all enjoy.

Community Engagement Committee Chair – Cllr Jeanette Johnson

The Communities Engagement Committee oversees arrangements of special events, including the annual Christmas light switch-on, transport, parking and highways issues and all items to do with the community as a whole.

The start of the council year saw the long-awaited re-tarmacking of the Padleys Lane and we are now delighted to say that Main Street is also programmed in for resurfacing during the coming financial year, thanks to the hard work and determination of NCC's Cllr Nicki Brooks. One of the most contentious issues for the village continues to be the parking situation and speeding. Councillors have met regularly with Notts County Council Highways Officers to try and find solutions to the problems.

The Village 'Clean Up' Campaign continues to grow from strength to strength. The Parish Council is extremely grateful to all of the volunteers who have adopted specific roads and areas throughout the village to keep them litter free on a regular basis; anybody interested in volunteering for the Scheme should contact the Parish Clerk in the first instance. Continuing the theme of litter, the Parish Council is also grateful to the children and staff from Burton Joyce Primary School, to councillors and to community volunteers who turn out with enthusiasm twice a year to take part in the big village clean up. This is a particularly useful initiative as the Borough Council has continued to reduce the amount of street cleaning they do.

The Parish Council continues to enjoy a strong connection with the Burton Joyce Primary School. Cllr Terry Hazard is the designated Parish Council liaison with the School and has regularly attended meetings of the School Council.

The Annual Christmas Fair and Festive Light Switch-on is a highlight of the community calendar and this year was no exception. Hundreds of people came along to join in the festivities and to watch Santa arrive into the village on the back of a Harley Davidson. Footage of the Christmas Fair can be found on Burton Joyce TV <https://www.youtube.com/BurtonJoyceTv>



Last but not least is the long list of issues and enquiries and enquiries from Parish Councillors or members of the public which are usually addressed via referrals to other agencies. These include things like speeding traffic, pavements and grass verges, obstruction to footpaths, gully clearing, over-hanging trees, litter and fly-tipping, graffiti, illegal signs, bus shelters, bus and train services.

Grateful thanks go to my fellow Parish Councillors, staff and volunteers who work so hard throughout the year to make Burton Joyce such a wonderful place to live and work.