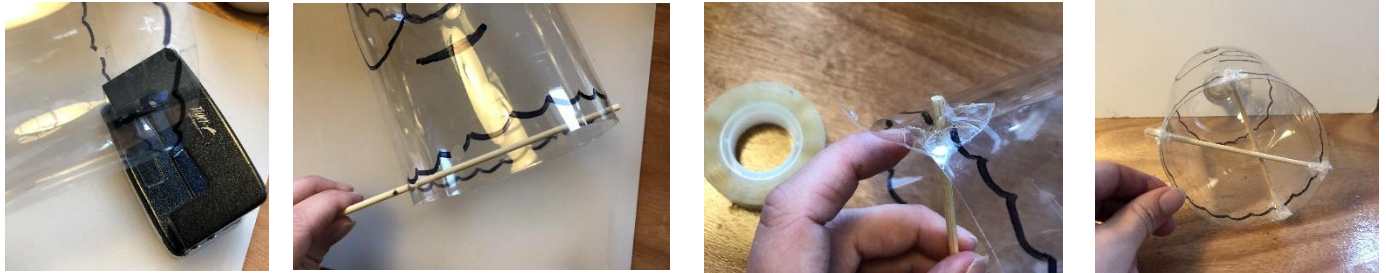


So that you can hang your lantern up, use a hole-punch to make 2 holes and thread with string or wire. If you are doing a Santa or Snowman skip this step. Using a marker pen draw your design onto the bottle or put a picture inside the bottle to follow. Big bold designs work best.

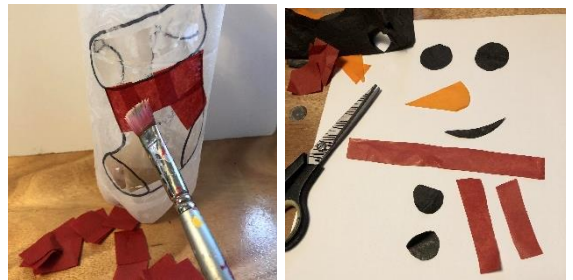


If you are doing the Santa or the snowman you need to put something to attach your light to at the bottom. **WARNING – sharp, adults only:** Make four holes across from each other at the bottom using a hole punch. Take your skewers and run them through the holes (they should form a cross). mark and trim the skewers to length with some scissors. Secure the skewers with plenty of clear tape.



Thin the PVA glue with a little water. Tear your tissue into small pieces and glue them onto the bottle, coating the bottle with glue then placing the tissue where you want it. Cover the whole bottle, you can

trim any overlapping tissue from the top once dry. Coat all your tissue in a thin layer of glue to seal the tissue down and leave to dry.



Once dry you can add extra details with marker pens or neaten up your outline drawing that is showing through. To hang up the Santa and Snowman lanterns tie your wire or string around the neck of the bottle. You can also cut the tissue into shapes or add decorated cardboard shapes, like Santa's pom-pom and snowman's hat.



For the standard lanterns you can just place your lights right inside. For the Santa/Snowman you need to feed your lights in through the bottom and then tape the battery pack to the wooden skewers.

Well done! You now have your finished lantern

