

Understorey woodland planting to diversify the shady setting at the entrance to the garden.



Asplenium scolopendrium

Enhancing the hedges with native species, growing wildflowers and encouraging a flowering lawn encourages wildlife



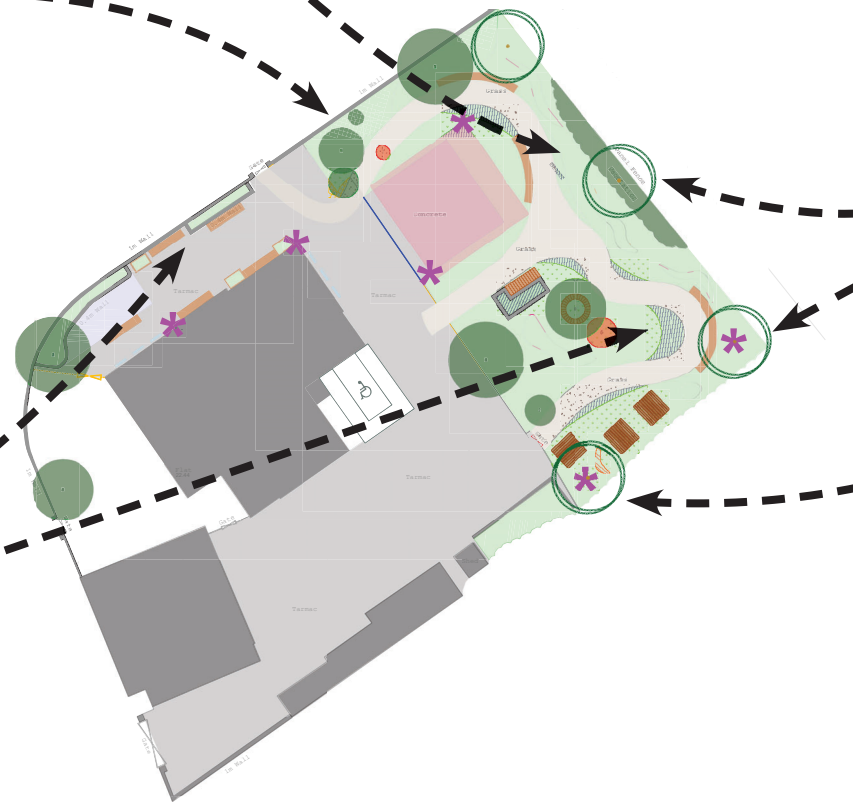
Betula pendula



Cyclamen coum



Epimedium rubrum



Trees provide shade, habitats and foraging opportunities!



Sorbus aucuparia

Plants will be selected to engage the senses.



Sarcococca confusa



Viburnum x bodnantense



Stachys byzantina



Lavandula sp.



Damson 'Merryweather'