

## NEWSLETTER

**JULY 2024**

### NEW COUNCILLOR

We were delighted to welcome the newest member of the Parish Council this month, Cllr Haydn Gregory. With a degree in Sports Science and Management, Haydn has lived in the village for 5 years and is keen to bring a new perspective to the Council in helping to meet our aims and objectives and to support the continued development and progress of our much-loved village.

### POP-UP FOOD FAYRES

The popularity of the monthly Food Fayres continues, as the latest event provided a wide selection of food and drink from a diverse range of independent providers. The smell of fresh coffee and waffles filled the air for the late breakfasters, with a fantastic selection of hot snacks and sweet treats for lunch, and drinks hot and cold to wash it all down! The Fayres provide a fantastic opportunity to meet friends and family for a casual Sunday get-together. We look forward to hosting the next one in September (note there will not be an August Fayre).



### STAFF VACANCIES

Some of our dedicated members of casual staff will be heading off to university in September; they will be greatly missed and are thanked by us all for their hard work. As a result we will have 2 part-time vacancies – ‘Office Cleaner’ and ‘Poplars Tea Bar Staff’. These are in addition to a newly created post of ‘Pop-Up Food Fayre Organiser’ which is also available. If you are interested in applying, please keep an eye out on our website, Facebook page and in the noticeboard for further details.

## **CALL FOR A BETTER SOLUTION FOR THE NELSON RAIL CROSSING**

In May 2024 Network Rail advised, during a co-ordination meeting with the Parish Council and other stakeholders, that the closure of the Chestnut Grove (Nelson) crossing was imminent, via a 6-month emergency 'temporary' closure order. They also installed CCTV on the Lee Road crossing and are monitoring it for its potential closure.

An on-site meeting was subsequently held with County Council representatives present, including the Transport Lead for the Council and the Countryside Access Manager, who expressed considerable concern for the effect of any closures in the village. Instead of closure, they suggested better crossing design, additional signage and maintenance of the nearby foliage.

It is recognised that pedestrian and train crew safety are paramount, but we need to be assured that all options have been explored before a closure is instigated because of the potential effect elsewhere in the village. Despite our repeated requests for research and analysis on the causes of incidents, and how they could be mitigated through well considered solutions, nothing substantive has been presented. Questions about the effectiveness of basic safety signage have been asked but not been answered. Without this evidence and an understanding of the impact a crossing closure would have, we do not believe it is convincing for us to accept closure of a basic right of way.



The Parish Council is calling for all authorities to work collaboratively on ways that enhance safety but also take a wider perspective to protect community access and amenity. We hope that the drop-in session held by Network Rail on 15<sup>th</sup> July helped raise awareness of the dangers of the crossings and encouraged safer crossing practices.

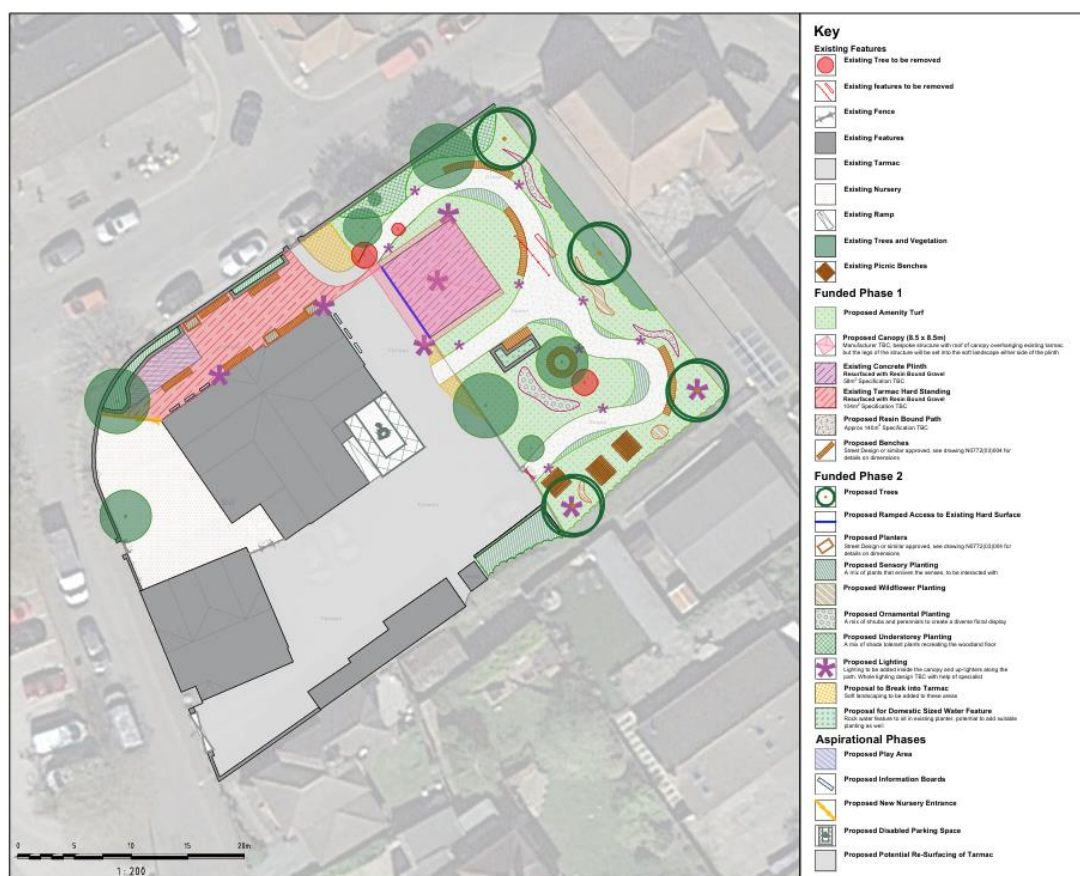
## **VILLAGE CENTRE DEVELOPMENT**

It has been some two years since we met Notts County Council Officers and received very welcome and encouraging support for our long-held village aspiration to improve the village centre. The Parish Council held meetings with designers within weeks and plans were expected within a few months. Since then, despite requests, no substantive information has been provided by our representative County Councillor. Following the rare opportunity presented to us and the Officers' initial support, we have been compelled to write directly to them for an update to understand what has or is taking

place on behalf of the residents of Burton Joyce. In response we have been advised that Cllr Michael Adams plans to “further engage a range of stakeholders shortly, including the Parish Council in respect of the current opportunities and emerging options. If options get to a point of being formalised and funded then relevant formal consultation may be required depending on the nature of the work proposed eg if Traffic Regulation Orders are required”.

## COMMUNITY GARDEN

We are currently awaiting the final Stage 4 plan for the garden which includes all technical specifications to allow us to go out to tender for the planned works. In the meantime we have submitted grant applications, to supplement the £70k s106 fund we received from Gedling Borough Council to initiate the project. We anticipate a decision in the next few weeks for a £5k grant from Gedling’s High Street fund and £20k from Notts County Council’s Capital fund. We will also shortly be applying for a £100k grant from FCC, who previously funded the playground refurbishment. Other funding sources are also being explored to maximise the potential of this village centre site.



## DATES FOR YOUR DIARY

- Picnic in the Park at the Grove, off Willow Wong – Saturday 7<sup>th</sup> September
- Pop-Up Food Fayre at the Old School Building – Sunday 29<sup>th</sup> September
- Fireworks Night at the Poplars Sports Ground – Friday 1<sup>st</sup> November
- Christmas Lights Switch-On, Main Street – Saturday 7<sup>th</sup> December